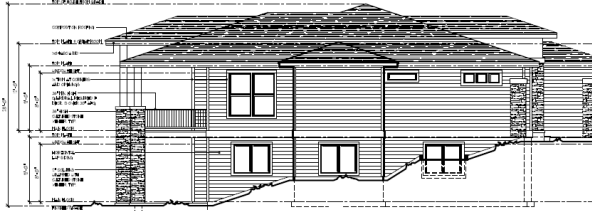


REAR ELEVATION
SCALE: 3/8"=1'-0"

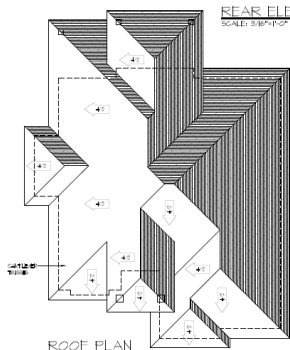
RIGHT ELEVATION
SCALE: 3/8"=1'-0"



LEFT ELEVATION
SCALE: 3/8"=1'-0"



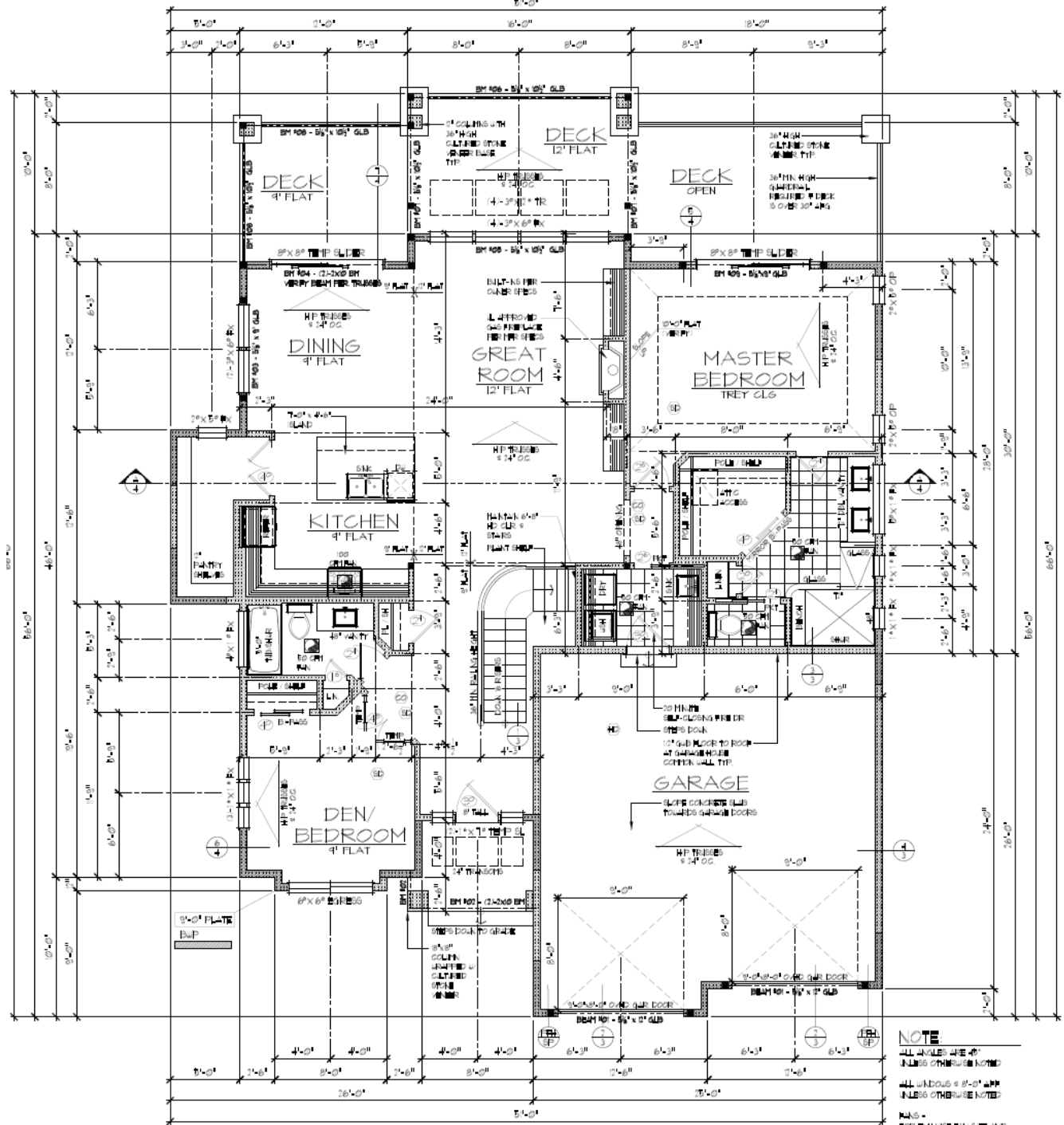
FRONT ELEVATION
SCALE: 3/8"=1'-0"



ROOF PLAN
SCALE: 1/8"=1'-0"

INDEX OF DRAWINGS:
1. EXTERIOR ELEVATIONS, ROOF PLAN
2. MAIN FLOOR PLAN
3. FOUNDATION PLAN
4. TYPICAL DETAILS, BUILDING SECTION
5. NOTES AND SPECIFICATIONS

TABLE 1: PERMIT REQUIREMENTS		TABLE 2: PERMIT FEES	
ITEM	DESCRIPTION	AMOUNT	REMARKS
1	PERMIT	\$150.00	BASE PERMIT FEE
2	INSPECTION	\$100.00	PER INSPECTION VISIT
3	PLAN REVIEW	\$50.00	PER PLAN REVIEW VISIT
4	FINAL APPROVAL	\$100.00	FINAL APPROVAL FEE
5	RECORD DRAWINGS	\$100.00	RECORD DRAWING FEE
6	SEWER CONNECTION	\$500.00	SEWER CONNECTION FEE
7	WATER CONNECTION	\$500.00	WATER CONNECTION FEE
8	STORM SEWER CONNECTION	\$500.00	STORM SEWER CONNECTION FEE
9	LANDSCAPE LIGHTING	\$100.00	LANDSCAPE LIGHTING FEE
10	LANDSCAPE IRRIGATION	\$100.00	LANDSCAPE IRRIGATION FEE
11	LANDSCAPE TREES	\$100.00	LANDSCAPE TREES FEE
12	LANDSCAPE SHRUBS	\$100.00	LANDSCAPE SHRUBS FEE
13	LANDSCAPE MULCH	\$100.00	LANDSCAPE MULCH FEE
14	LANDSCAPE SOIL	\$100.00	LANDSCAPE SOIL FEE
15	LANDSCAPE GRASS	\$100.00	LANDSCAPE GRASS FEE
16	LANDSCAPE ROCK	\$100.00	LANDSCAPE ROCK FEE
17	LANDSCAPE SAND	\$100.00	LANDSCAPE SAND FEE
18	LANDSCAPE FERTILIZER	\$100.00	LANDSCAPE FERTILIZER FEE
19	LANDSCAPE PESTICIDES	\$100.00	LANDSCAPE PESTICIDES FEE
20	LANDSCAPE SEEDS	\$100.00	LANDSCAPE SEEDS FEE

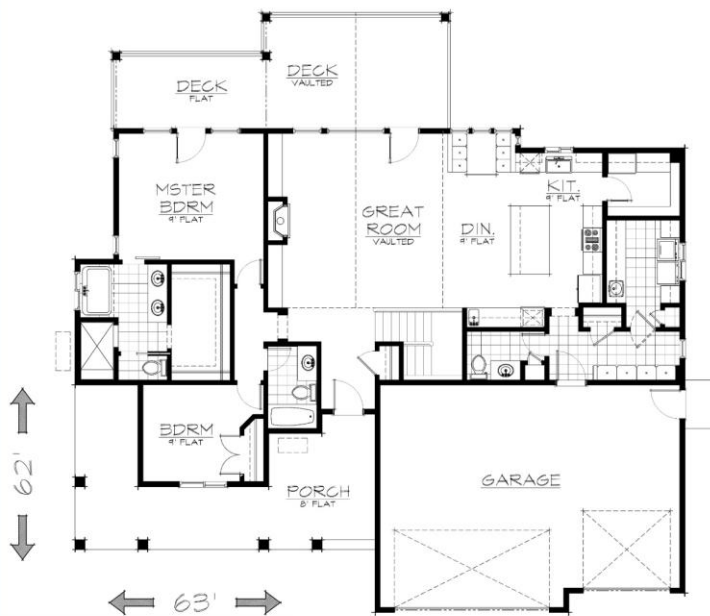


MAIN FLOOR PLAN

NOTE:
ALL ANGLES ARE 90°
UNLESS OTHERWISE NOTED
ALL WINDOWS ARE 2'-0" HIGH
UNLESS OTHERWISE NOTED
FANS -
FOR QUALITY PLAN SEE AND
LOCATION REFER TO NOTES 1
1.000' 0.00' 0.00' 0.00' 0.00'



1768-RANCHER



1768 Sq Ft

-2 Bed

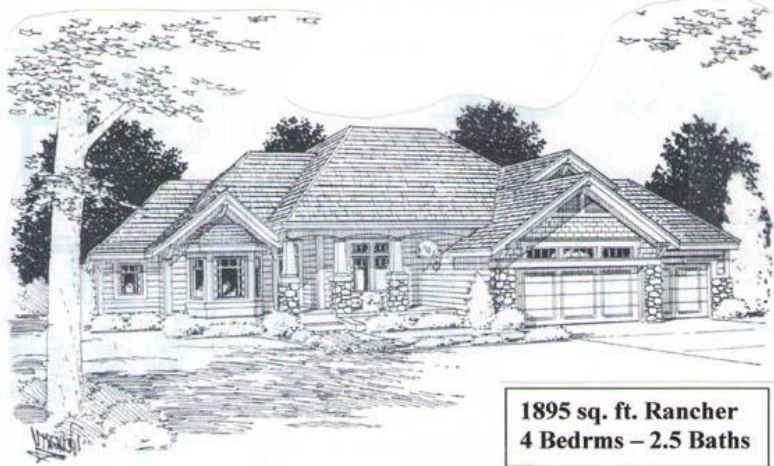
-2 1/2 Bath

-3 Car

-63' Width

-62' Depth

-Basement



1895 sq. ft. Rancher
4 Bedrms – 2.5 Baths





Life is sweet.



Plan No. 1876-R

- ❖ Inspired by more traditional East Coast designs, this pleasing façade has decorative wrapped columns, cedar shutters, and arched transom windows.
- ❖ Forward facing Master Suite takes advantage of site specific views and is complemented by a Master Bath with an abundance of natural lighting, his and hers vanities, large shower and ample closet space.
- ❖ Side by side secondary bedrooms share a hallway bath and both rooms have plenty of closet space.
- ❖ Access from the Garage leads thru the mudroom and into a laundry space that has a continental entry.
- ❖ The Dining Room, located at the front of the house, provides built-in china niche and is open to the large centrally located Great Room.

MAIN FLOOR.....	1876 SQ FT
GARAGE.....	667 SQ FT
BEDROOMS	3
BATHROOMS	2
(FULL BASEMENT)	

Price Code C
1751-2250



Spacious and inviting.

Plan No. 1851-R

MAIN FLOOR.....1851 SQ FT
 GARAGE.....620 SQ FT
 BEDROOMS3
 BATHROOMS.....2
 (FULL BASEMENT)

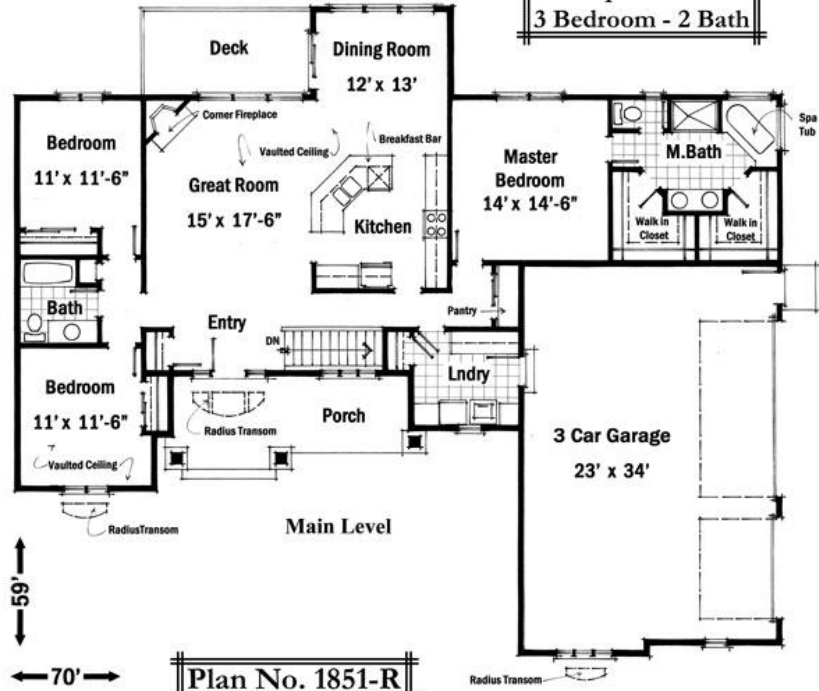
- ❖ A myriad of textures showcase the exterior of this East Coast-styled home.
- ❖ There is plenty of space for the chef and his helpers in the large well designed Kitchen that also features a tucked away computer center adjacent to a full walk-in pantry.
- ❖ The oversized three car Garage also allows for tandem parking of a fourth car or recreational vehicle.
- ❖ This spacious owners Suite adjoins a compartmentalized Master Bath with his and hers vanities, a large shower and a corner spa tub.
- ❖ Inviting and open staircase leads to a full basement that; depending on site conditions could be a daylight.



Price Code C
 1751-2250



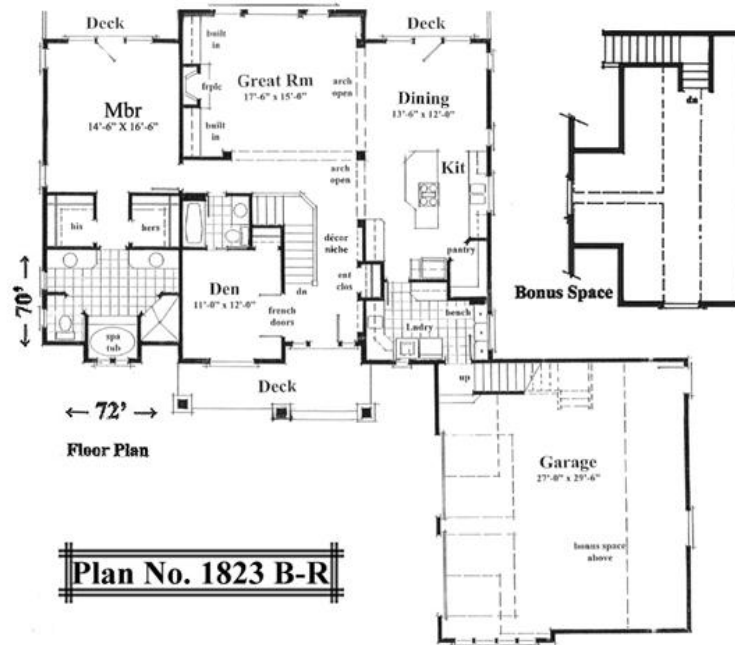
1851 sq. ft. Rancher
3 Bedroom - 2 Bath



Plan No. 1851-R



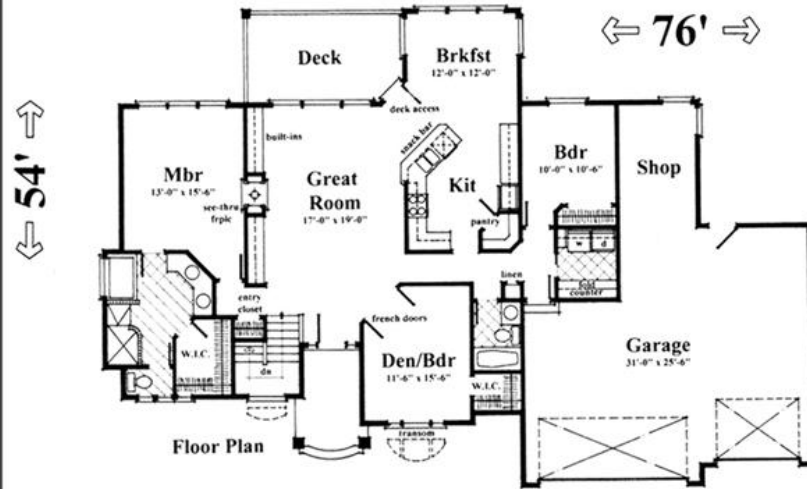
1823 S.F Rancher
3 Bedroom 2 Bath



Plan No. 1823 B-R



1823 S.F Rancher
3 Bedroom 2 Bath



Plan No. 1823 A-R



♪ You're beautiful and you're mine! ♪

- ❖ A volume ceiling and cozy fireplace create the perfect gathering place for family and friends.
- ❖ The open Dining Room and Kitchen provide a feeling of spaciousness that will allow you to enjoy home activities.
- ❖ A covered porch with a courtyard feel gives this gracious home a sophisticated, stately look.

Plan No. 1815-R

MAIN FLOOR.....1815 SQ FT
 GARAGE.....439 SQ FT
 BONUS294 SQ FT
 BEDROOMS3
 BATHROOMS2
 (FULL BASEMENT)



← 58' →

← 51' →

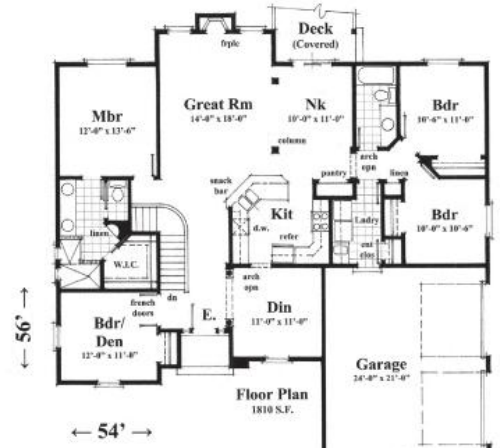
Price Code C
 1751-2250



Gorgeous country charmer makes living easy.

Plan No. 1810-R

MAIN FLOOR.....1810 SQ FT
 GARAGE.....504 SQ FT
 BEDROOMS.....4
 BATHROOMS.....2
 (FULL BASEMENT)

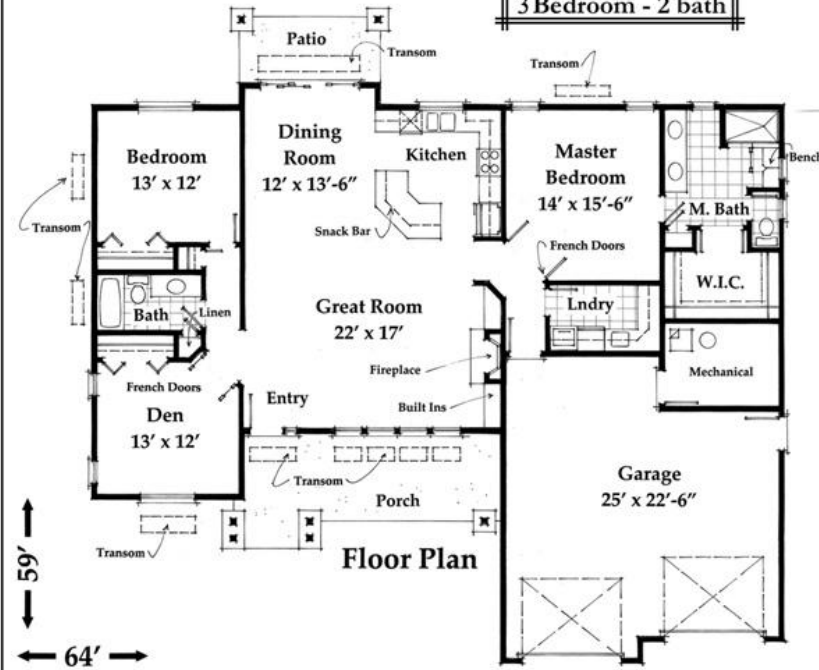


- ❖ This gorgeous French Country home is a growing family's dream come true. ♪ when you wish upon a star . . . makes no difference who you are . . . ♪
- ❖ Spacious and strategically placed, the Great Room opens up to a central fireplace, flanked by oversized windows creating a light filled expanse.
- ❖ The open snack bar to the Great Room provides a contemporary touch, while a hidden pantry behind the Laundry room offers ample storage.
- ❖ Utility and Laundry room is conveniently located close to the secondary bedrooms and bath which makes doing the laundry a snap.
- ❖ Included in the luxurious design of the Master Suite are two vanity sinks, a large walk-in closet and an oversized no-door glass-block enclosed shower.

Price Code C
1751-2250



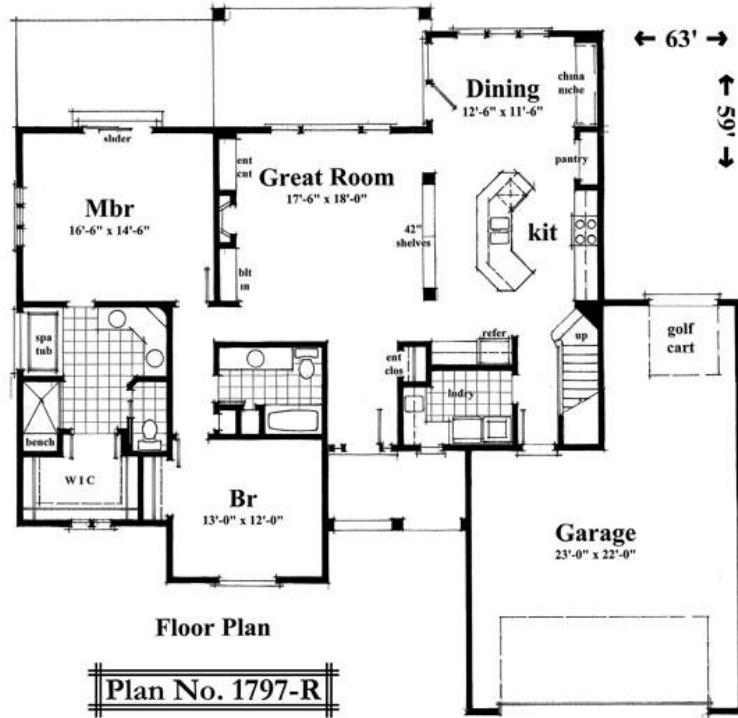
1805 sq. ft. Rancher
3 Bedroom - 2 bath



Plan No. 1805-R



1797 sq. ft. Rancher
2 Bedroom - 2 Bath

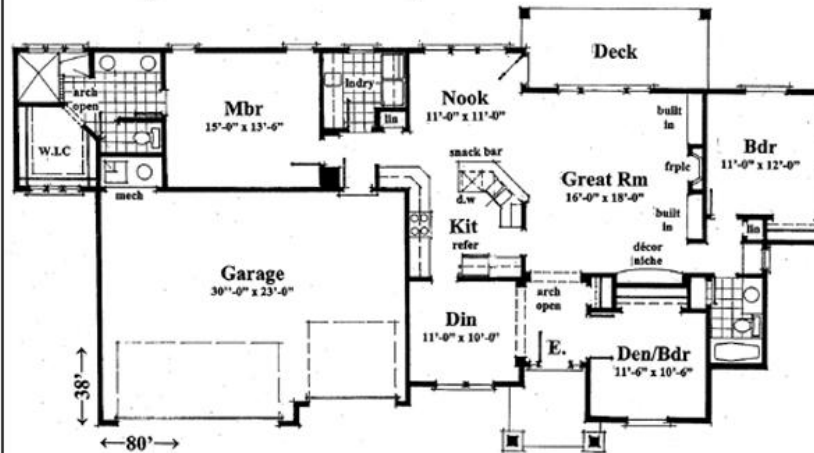


Floor Plan

Plan No. 1797-R



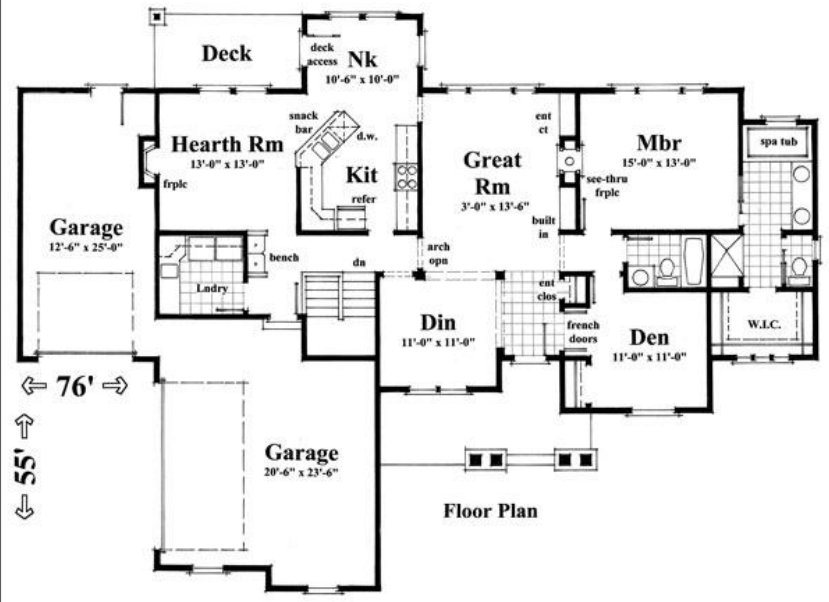
1760 S.F. Rancher
3 Bedroom 2 Bath



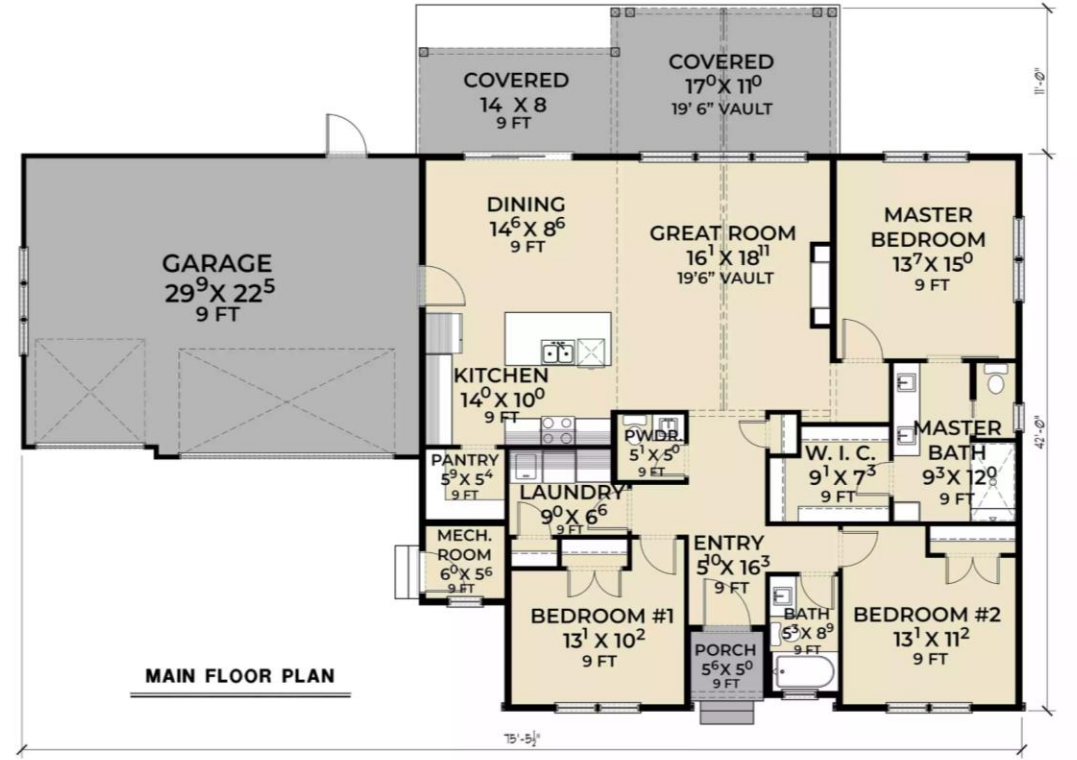
Plan No. 1760-R

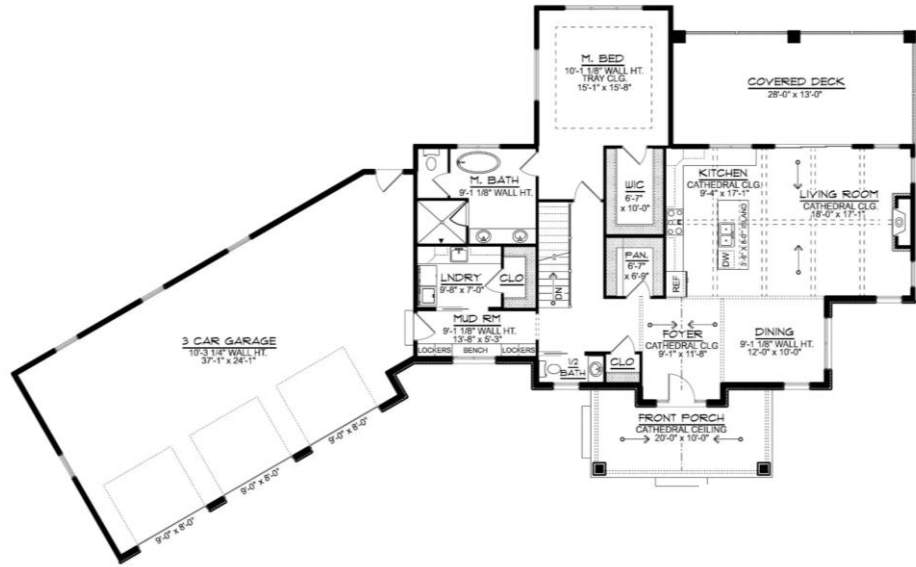


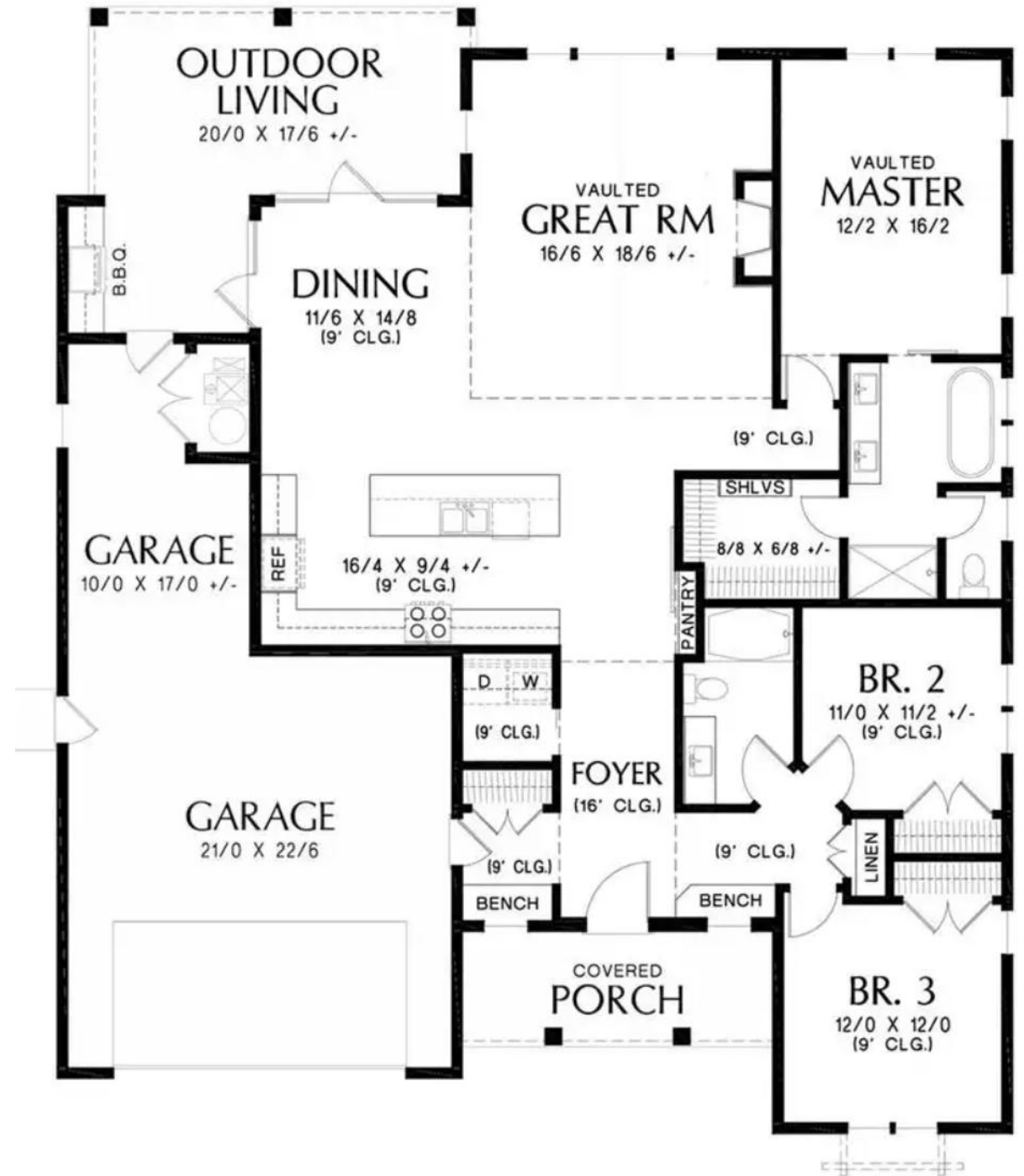
1754 sq. ft. Rancher
2 Bedroom - 2 Bath

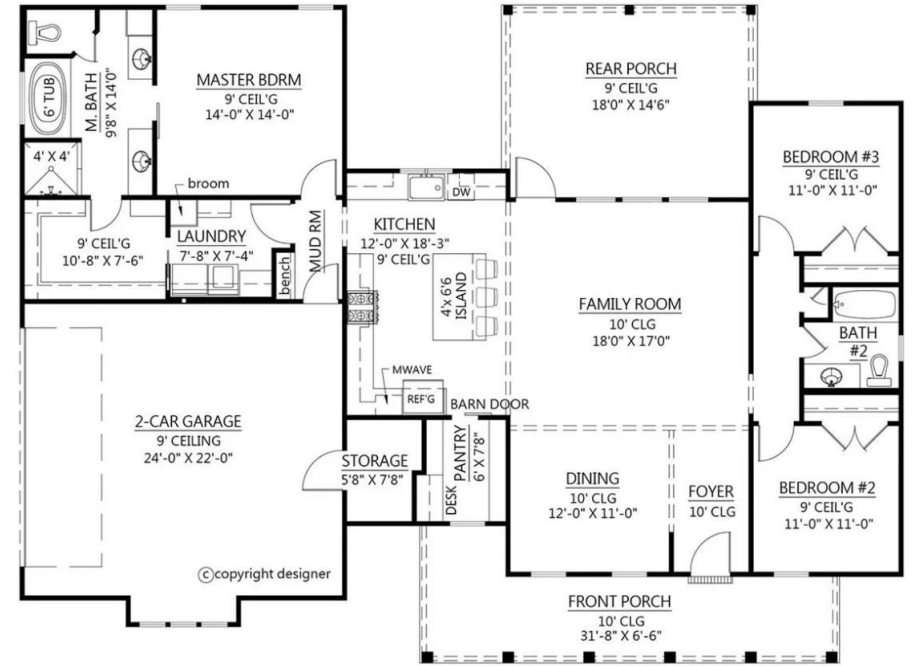


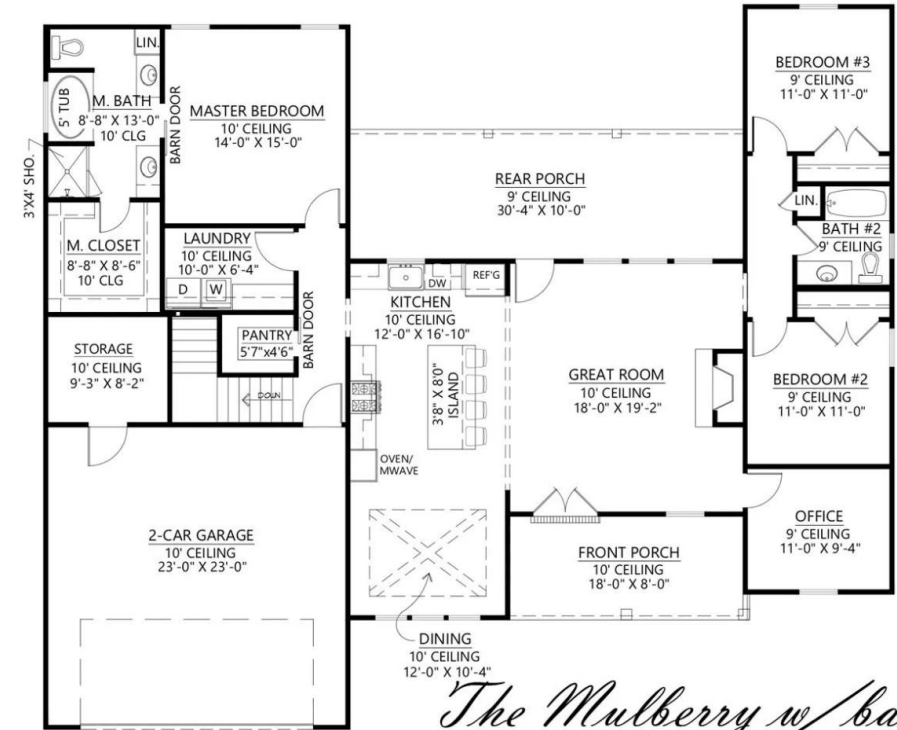
Plan No. 1754-R







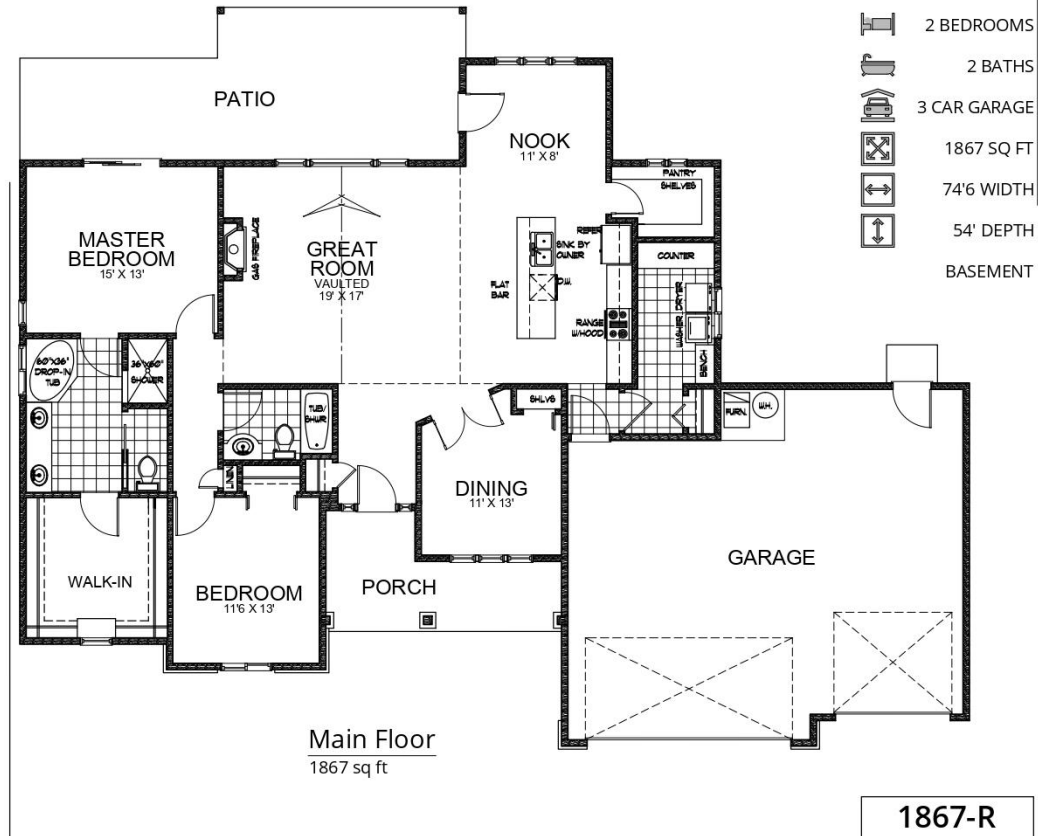


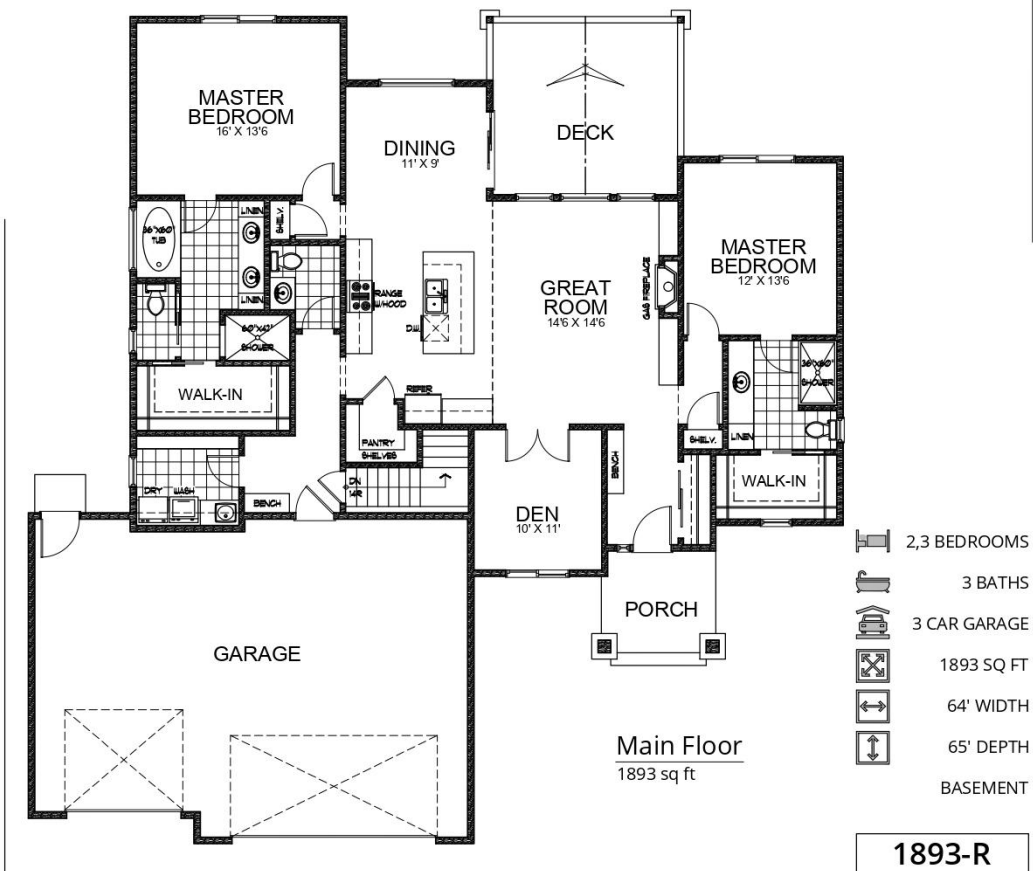


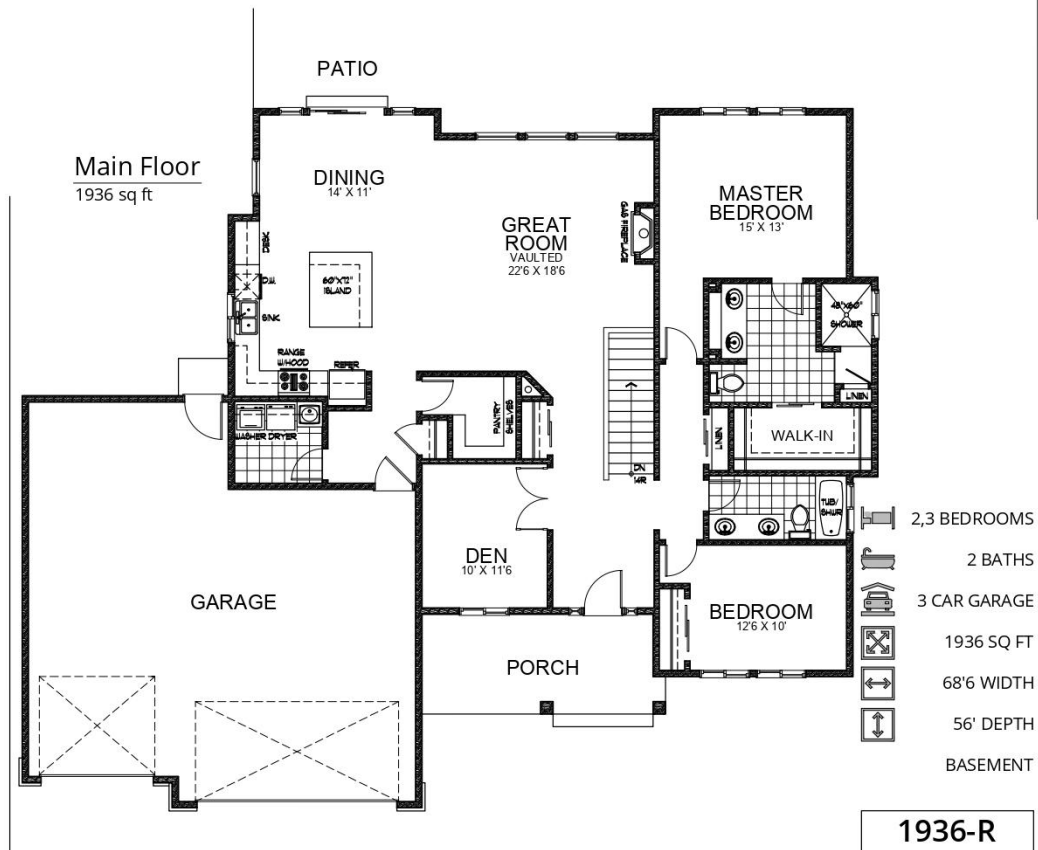
The Mulberry w/basement

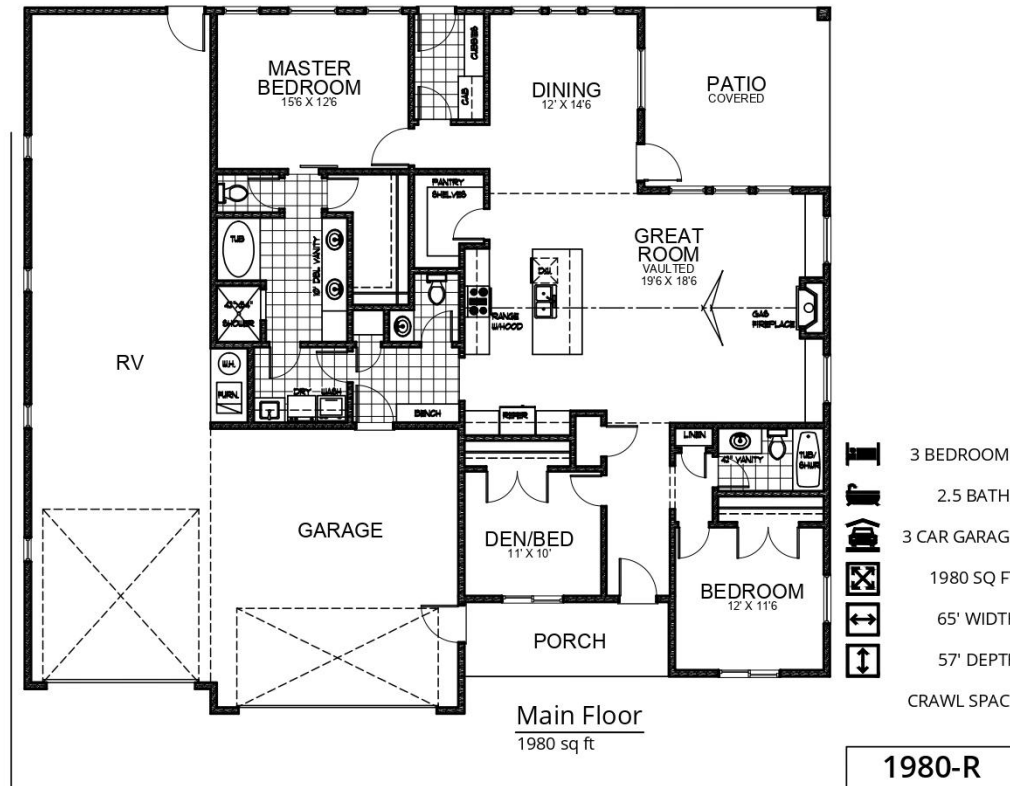
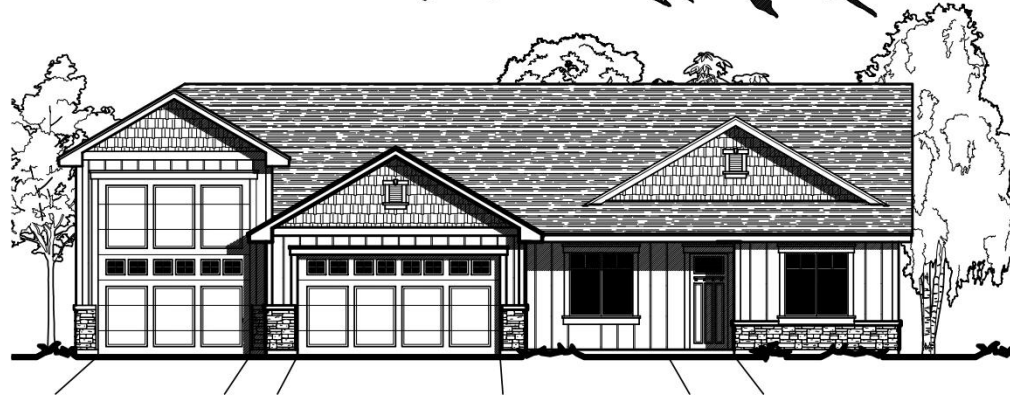
SQUARE FOOTAGE	
LIVING	1885
TOTAL SQ. FT.	2965

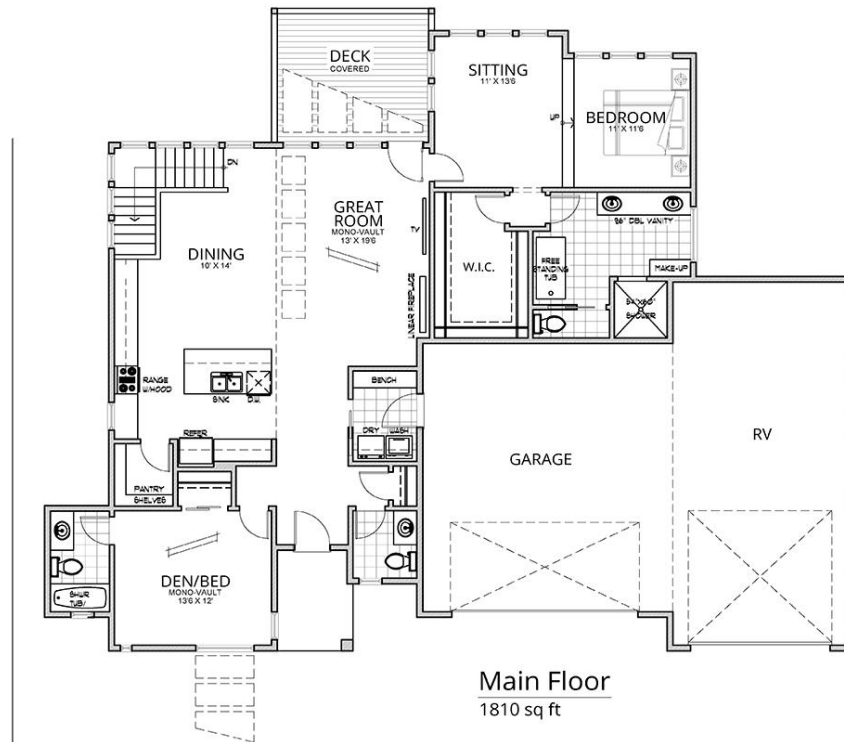
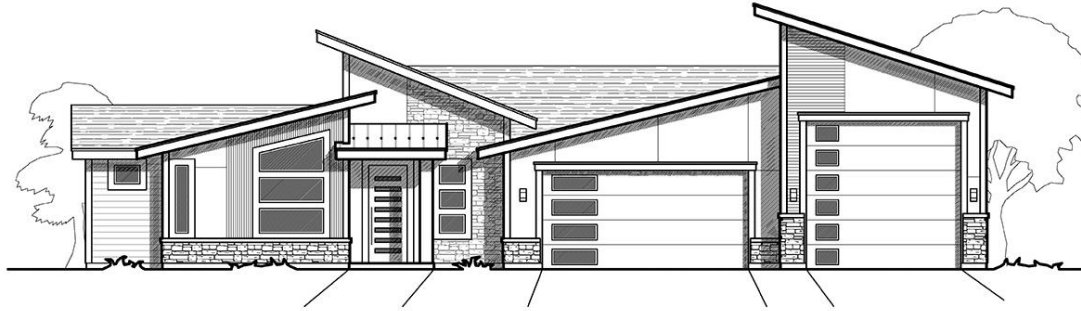
Width 65'-8" x 55'-11" Depth





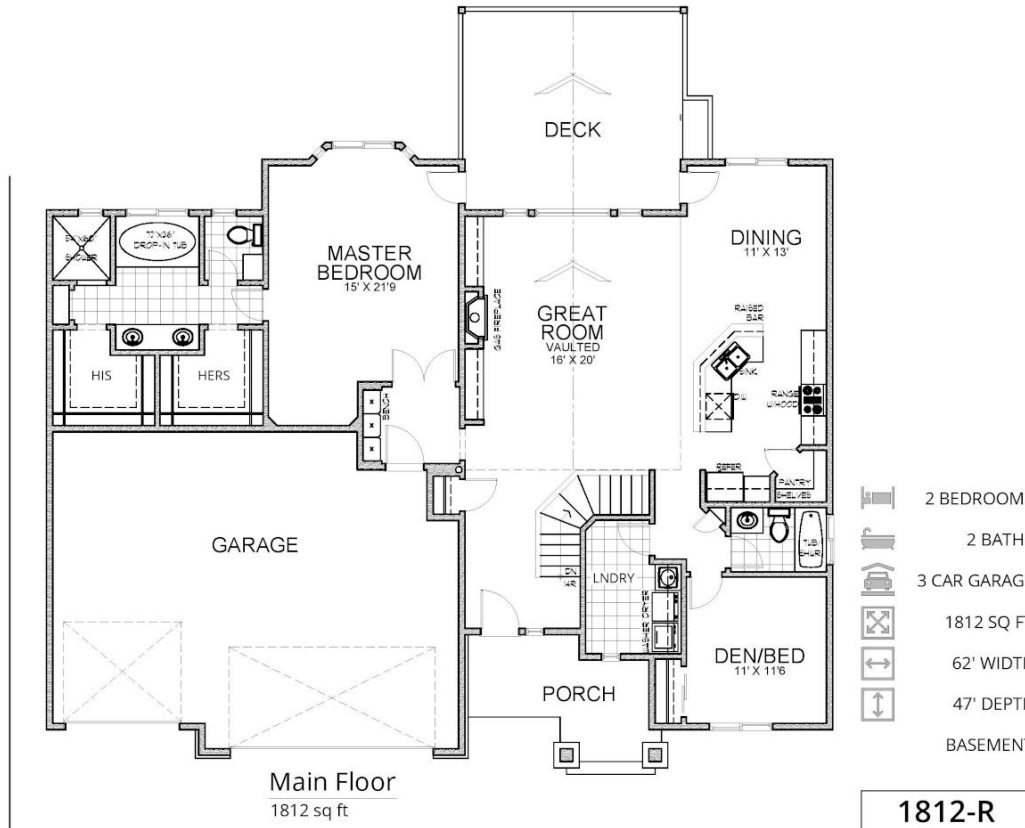


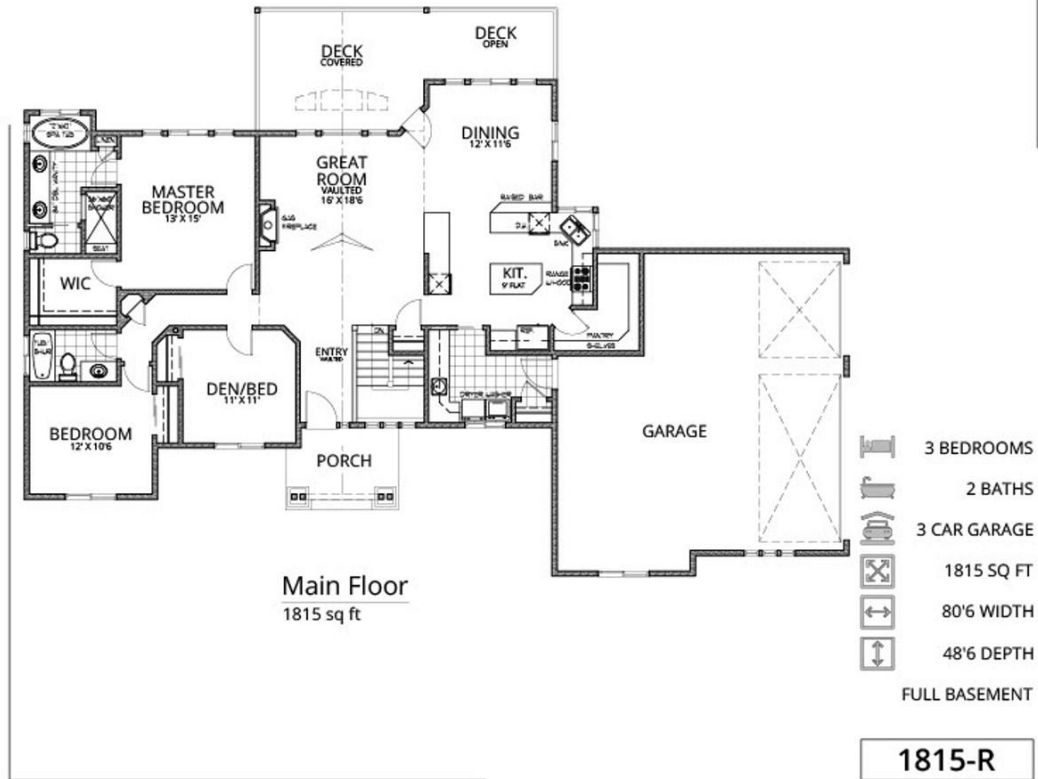


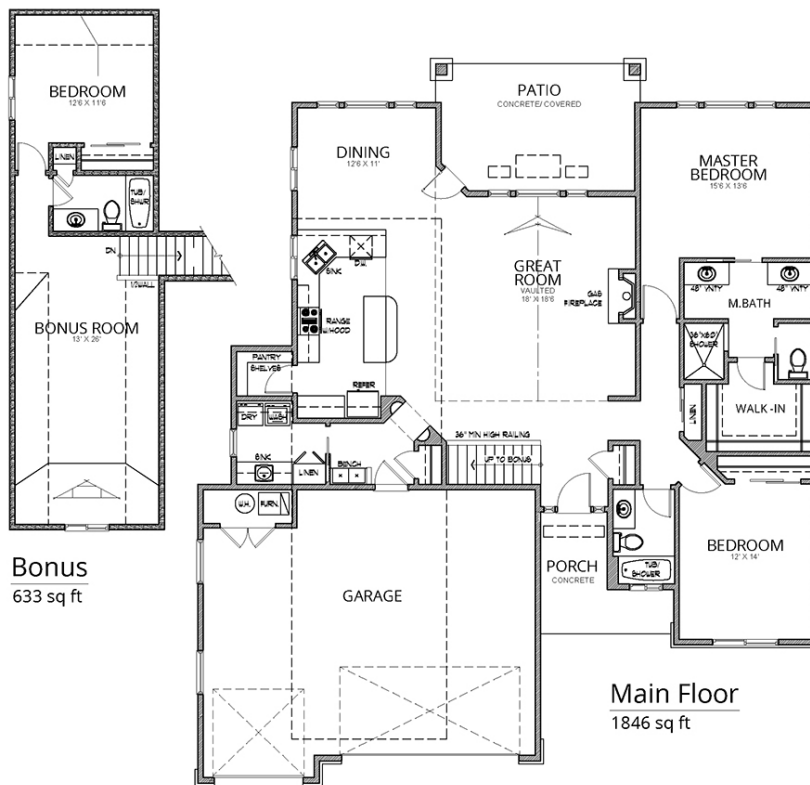


-  2 BEDROOMS
-  2.5 BATHS
-  3 CAR GARAGE
-  1810 SQ FT
-  69'6" WIDTH
-  55'6" DEPTH
- FULL BASEMENT

1810-R





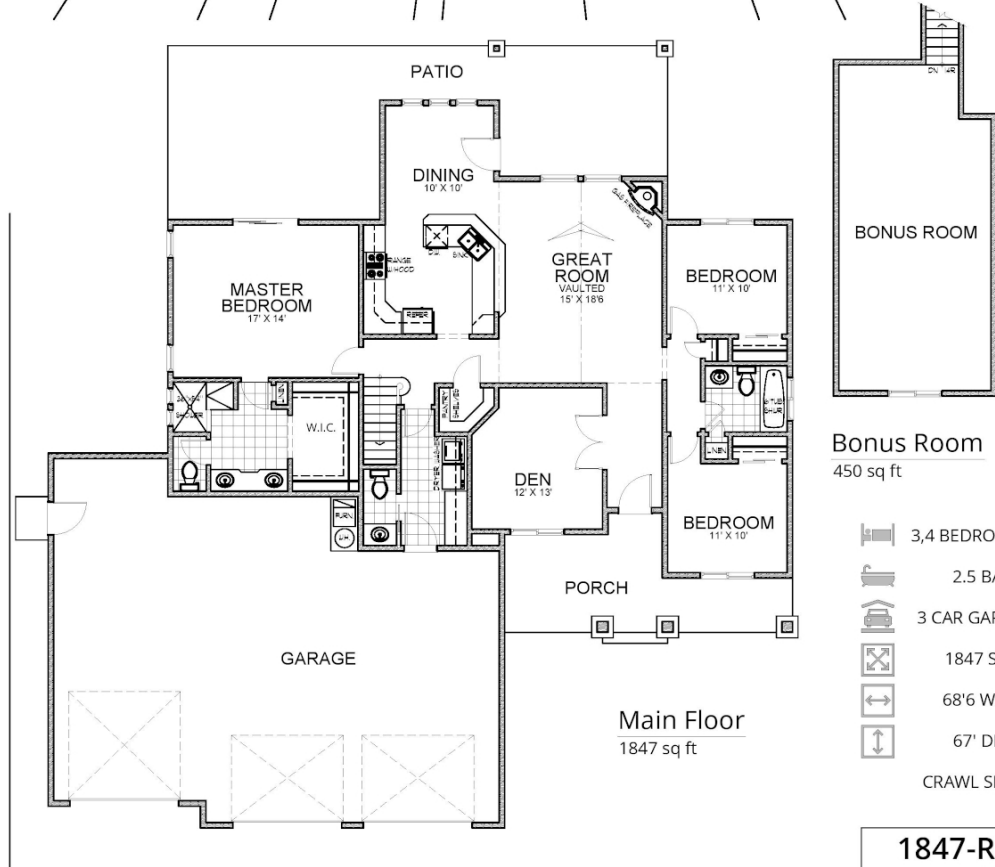


Bonus
 633 sq ft

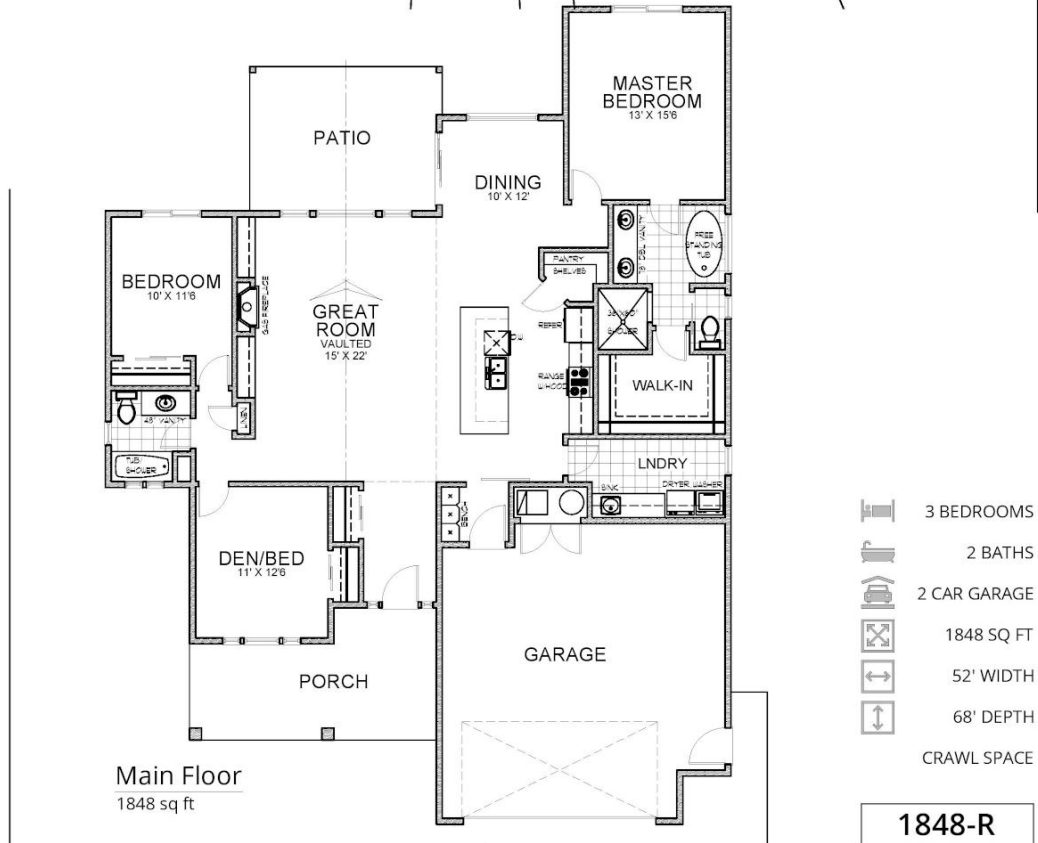
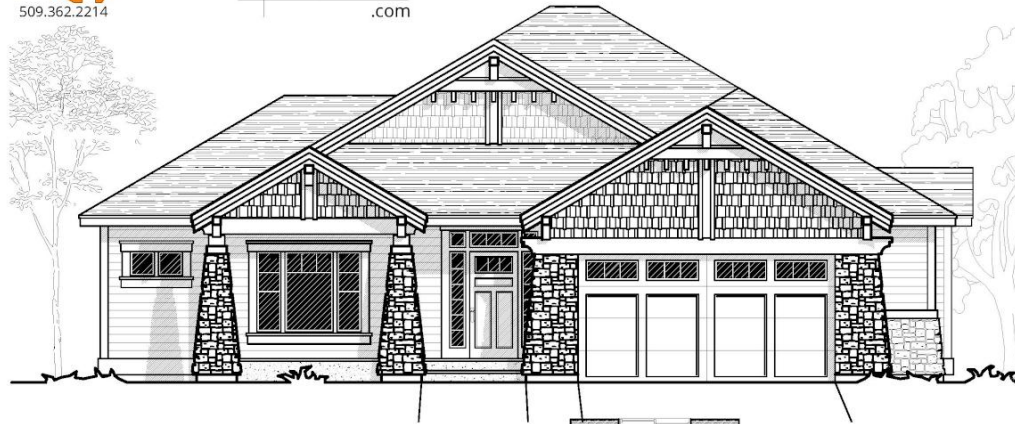
Main Floor
 1846 sq ft

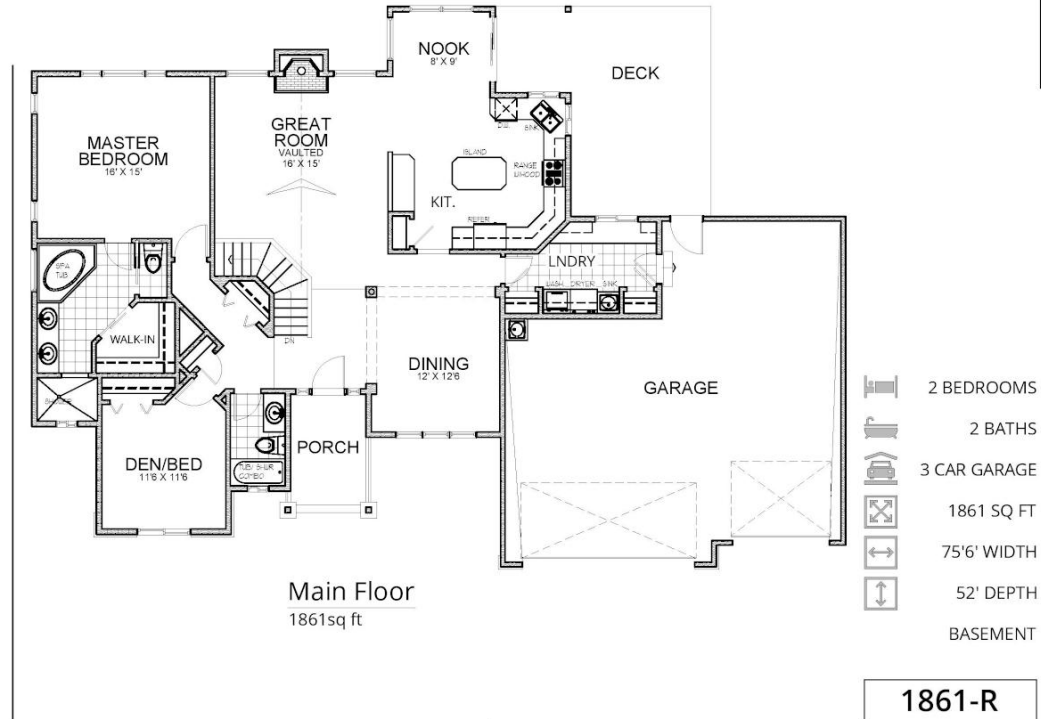
-  2 BEDROOMS
-  2 BATHS
-  3 CAR GARAGE
-  1846 SQ FT
-  56' WIDTH
-  61'6" DEPTH
-  CRAWL SPACE

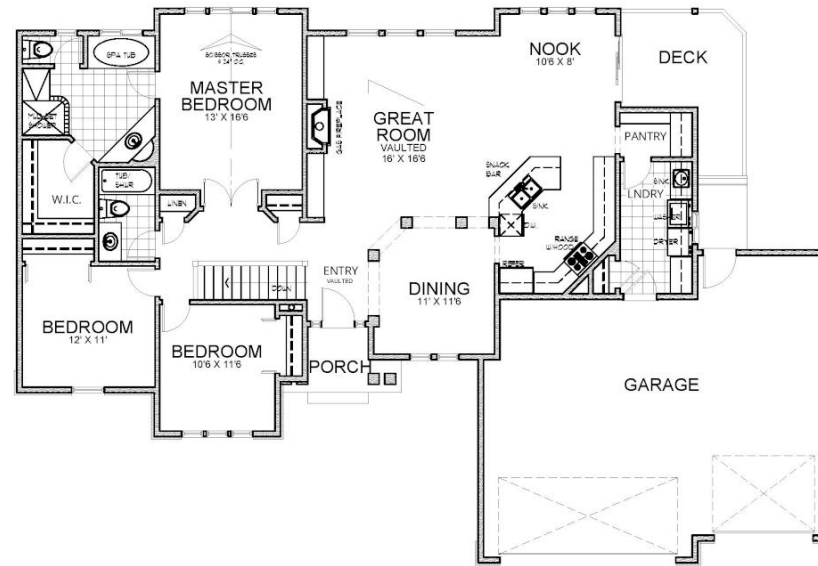
1846-R



1847-R



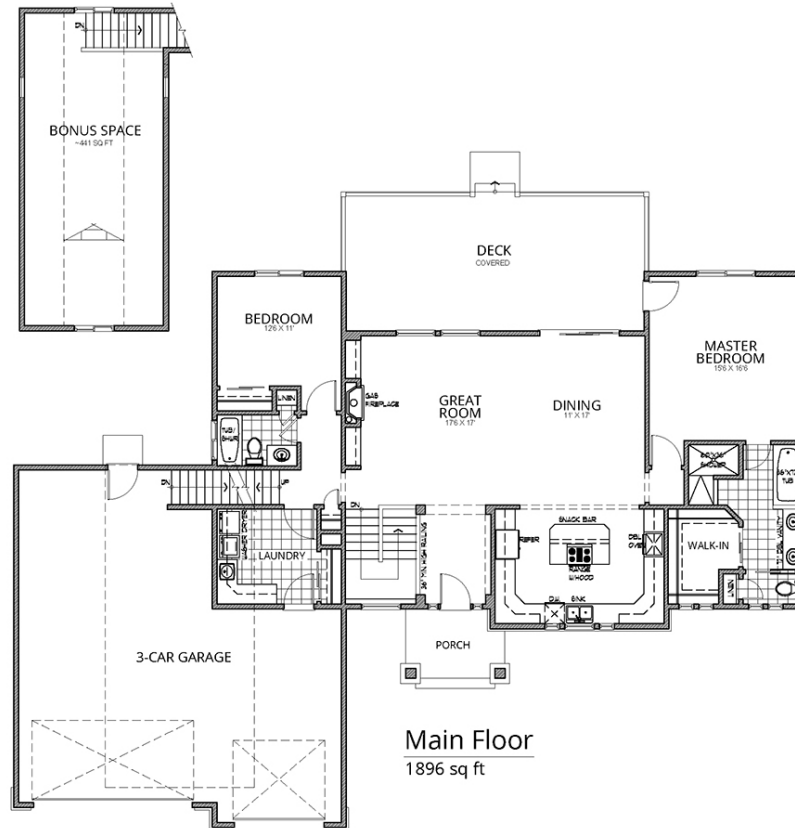








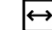
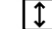
Main Floor
 1875 sq ft

-  3 BEDROOMS
-  2 BATHS
-  3 CAR GARAGE
-  1875 SQ FT
-  74' WIDTH
-  50'6" DEPTH
-  BASEMENT

1875-R



Main Floor
 1896 sq ft

-  2 BEDROOMS
-  2 BATHS
-  3 CAR GARAGE
-  1896 SQ FT
-  80' WIDTH
-  56' DEPTH
- FULL BASEMENT

1896-R

